
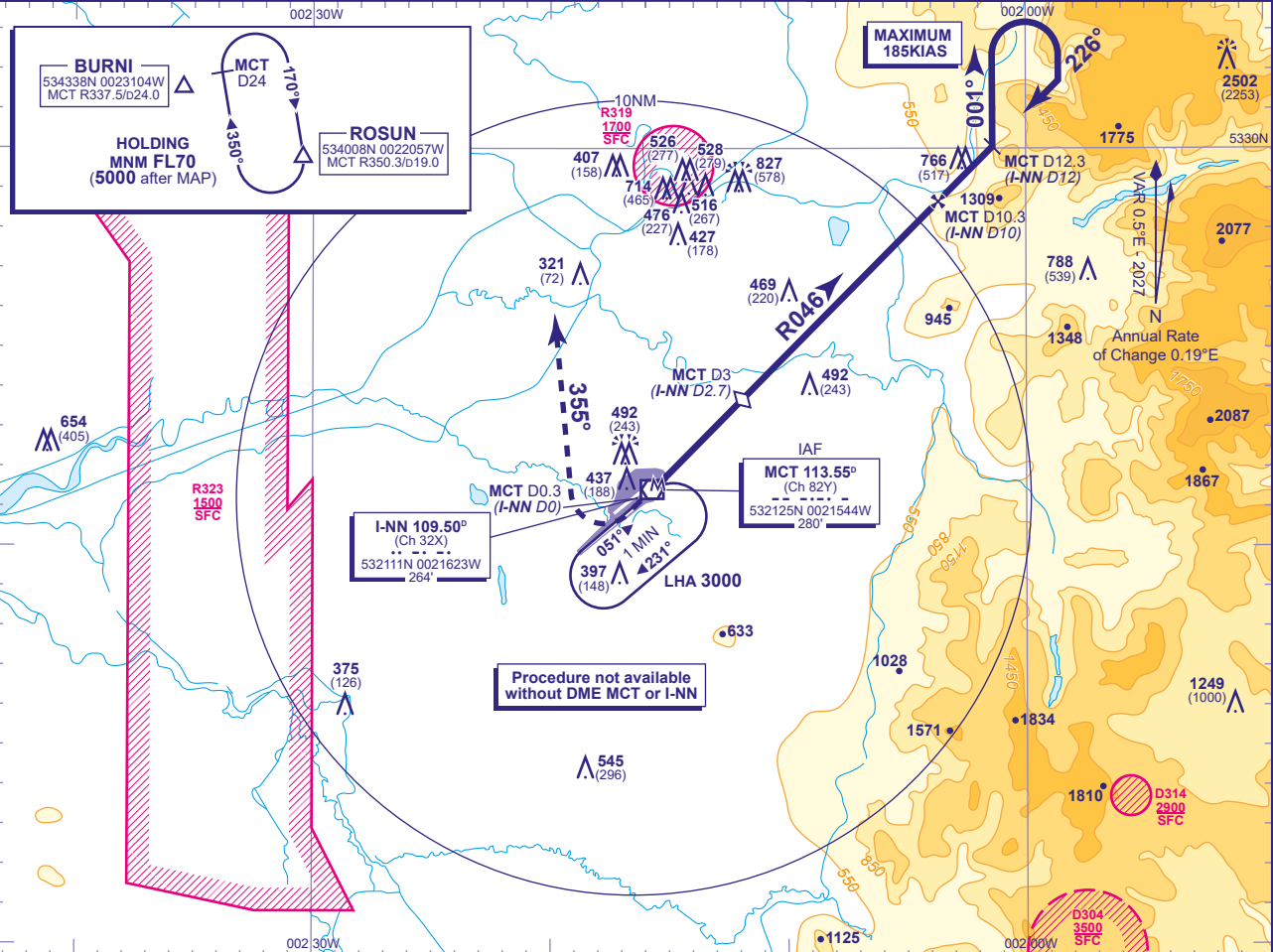


INSTRUMENT APPROACH - ICAO

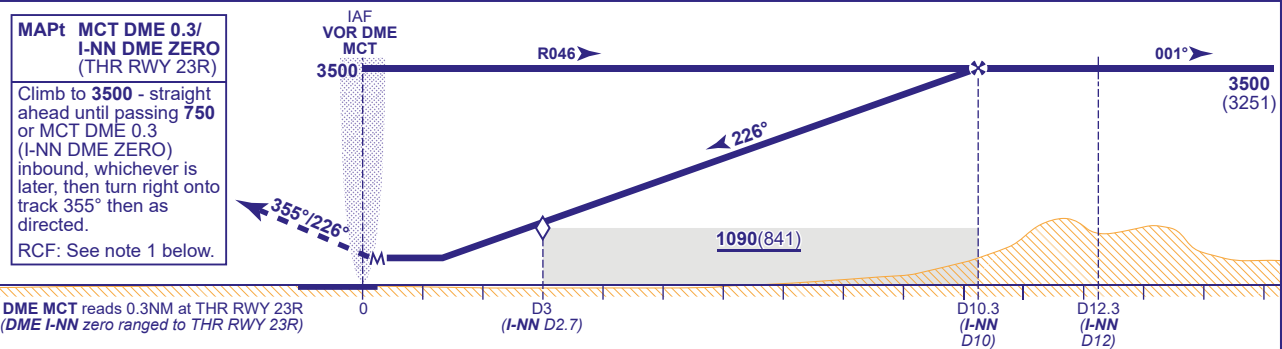
MANCHESTER
VOR/DME
RWY 23R
(ACFT CAT A,B,C,D)

	APP	118.580, 135.005	MANCHESTER RADAR	AD ELEVATION	257	VOR/DME RWY 23R (ACFT CAT A,B,C,D)
		121.355	MANCHESTER DIRECTOR	THR ELEVATION	249	
	TWR	118.630, 119.405	MANCHESTER TOWER	OBSTACLE ELEVATION 2502 AMSL (2253) (ABOVE THR)		
		121.855, 121.705	MANCHESTER GROUND			
	ARRIVAL ATIS	128.180	MANCHESTER INFORMATION	BEARINGS ARE MAGNETIC		
			TRANSITION ALTITUDE			5000



RECOMMENDED PROFILE Gradient 5.2%, 320FT/NM

DME MCT(I-NN)	9(8.7)	8(7.7)	7(6.7)	6(5.7)	5(4.7)	4(3.7)	3(2.7) (SDF)	2(1.7)
ALT(HGT)	3080(2831)	2760(2511)	2440(2191)	2120(1871)	1800(1551)	1480(1231)	1160(911)	840(591)



Aircraft Category	A	B	C	D	Rate of descent	G/S KT	160	140	120	100	80
OCA (OCH)	Procedure	690(441)	690(441)	690(441)		FT/MIN	850	750	640	530	430
VM(C)OCA (OCH AAL)	Total Area	790(533)	820(563)	1110(853)							

NOTE 1 In the event of RCF follow the standard MAP on to track 355°. At MCT DME 10 turn direct to BURNI (MCT R338/MCT DME 24) climbing to 5000 to enter the ROSUN hold. Aircraft unable to make 3500 before MCT DME 10, commence climbing turn left to 3500 at MCT DME 10. At 3500 or above continue left turn and proceed direct to BURNI.
2 DME I-NN may be used if DME MCT is not available.
3 FAT offset 5° from RWY C/L and crosses RWY C/L 1.3NM before THR RWY 23R.
4 Procedure turns restricted to maximum 185KIAS.

CHANGE (12/25): MCT VOR RECALIBRATED. MAG VAR. HEADINGS. WAYPOINT RADIALS.